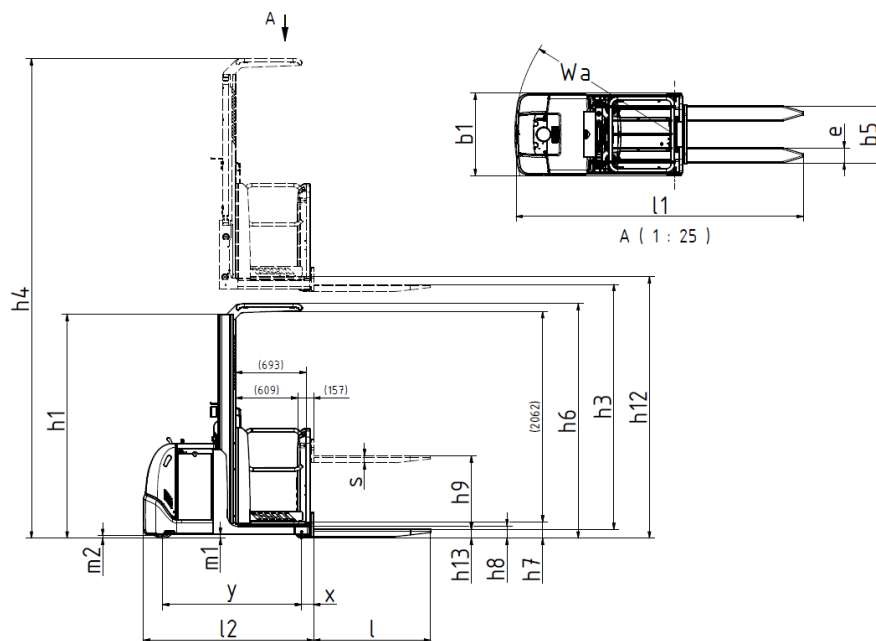




MEDIUM LEVEL ORDER PICKER

EOM 100 (1800 mm)

State-of-the-art ergonomics and excellent lift/drive performance to give high levels of productivity.



Mast type	Lift height H / h12	Height of mast lowered h1	Max mast height h4
Standard/Duplex	1730	2196	2196
Triplex			

Distinguishing mark	0	Specification		EOM 100 (1800 mm)
	1.2	Manufacturer's type designation		EPL 100 (1800 mm)
	1.3	Drive: electric (battery or mains), diesel, petrol, fuel gas		Electric
	1.4	Operator type: hand, pedestrian, standing, seated, order-picker		Order picker
	1.5	Load capacity/rated load	Q t	1000
	1.6	Load centre distance	c mm	400-600
	1.8	Load distance, centre of load axle to fork	X	Ergo lift 120
	1.9	Wheelbase	y mm	1365
Weight	2.1	Service weight incl battery		kg 1600
	2.2	Axle load, with load, front/rear		kg
	2.3	Axle load, without load, front / rear		kg 1015/635
	2.4	Axle load, fork outreached with load, front / rear		kg
	2.5	Axle load, fork retracted with load, front / rear		kg
Tyres, chassis	3.1	Tyres		Vulcollan
	3.2	Tyre size, drive side		mm 250/105
	3.3	Tyre size, load side		mm 120/115
	3.4	Dimensions additional wheels (castor wheels)		mm
	3.5	Wheels, number front/rear (drive side/load side, x = driven wheels)		1/2
	3.6	Track, drive side	b10 mm	0
	3.7	Track, load side	b11 mm	674
Dimensions	4.1	Tilt of mast/fork carriage, forward/backward		Grad
	4.2	Height, mast lowered		h1 mm 2196
	4.3	Free lift		h2 mm
	4.4	Lift height H = h13+h3		H mm 1730
	4.5	Height, mast extended		h4 mm 3787
	4.6	Straddle lift		h5 mm
	4.7	Height of overhead guard (cabin)		h6 mm (2300)
	4.8	Seat height/stand height		h7 mm 160/1800
	4.10	Height of wheel arms		h8 mm 115
	4.11	Additional lift		h9 mm 723
	4.14	Stand height, elevated		h12 mm
	4.15	Height lowered		h13 mm 90
	4.19	Overall length		l1 mm 2825
	4.20	Length to face of forks		l2 mm 1675
	4.21	Overall width		b1 mm 810
	4.21.1	Width over stabilizers		mm
	4.22	Fork dimensions		s/e/l mm 70/147/1150
	4.23	Fork carriage to ISO 2328, clas / form A, B		
	4.24	Width of fork carriage		b3 mm 560
	4.25	Width over forks, min/max		b5 mm 450-700
	4.26	Distance between wheel arms		b4 mm
	4.27	Width across guide rolls		b6 mm
	4.28	Reach distance		l4 mm
	4.29	Reach lateral		b7 mm
	4.30	Reach lateral from vehicle centerline		b8 mm
	4.31	Ground clearance, mast		m1 mm 35
	4.32	Ground clearance, centre of wheelbase		m2 mm 35
	4.33	Aisle width with pallet 1000 x 1200, crosswise		Ast mm
	4.34	Aisle width for pallet 800 x 1200, lenghtwise		Ast mm Min AST = B3 + 180 = 960 mm (S1)
	4.35	Turning radius		Wa mm 1570
	4.37	Length incl reach legs		l7 mm
	4.38	Distance to swivelling-fork pivot		0 mm
Performance data	5.1	Travel speed, with/without load		km/h 9/12
	5.1.1	Travel speed with/without load, backwards		km/h
	5.2	Lift speed, with/without load		m/s 0,11/0,19
	5.3	Lowering speed, with/without load		m/s 0,24/0,22
	5.4	Reach speed, with / without load		m/s
	5.7	Gradient, with/without load		% 10,3%/18%
	5.8	Max gradeability, with / without load, 5 min rating		% 10,4%/22,5%
	5.9	Acceleration time 0-10 m, with/without load		s 5,5/4,8
	5.10	Service brake: electric, hydraulic		El. - magnetic
	5.10.1	Parking brake: electric, hydraulic		Electric
Electric engine	6.1	Drive motor, rating S2 60 min		kW Letrika 2,7kW
	6.2	Lift motor		kW 2,2kW (5%)
	6.3	Battery according to DIN 43531/35/36		A,B,C BS
	6.4	Battery voltage / Battery capacity		V/Ah 24V/486Ah-600Ah
	6.5	Battery weight		kg Min 450Kg
	6.6	Power consumption according to VDI cycle		kWh/h 0,955
Additional data	8.1	Speed regulation		AC Traction
	10.1	Operating pressure attachments		bar
	10.2	Oil flow for attachments		l/min
	10.7	Noise level at operator's ear, according to EN 12 053		db(A) 57

* Varies according to battery size

All rights reserved to change above specification