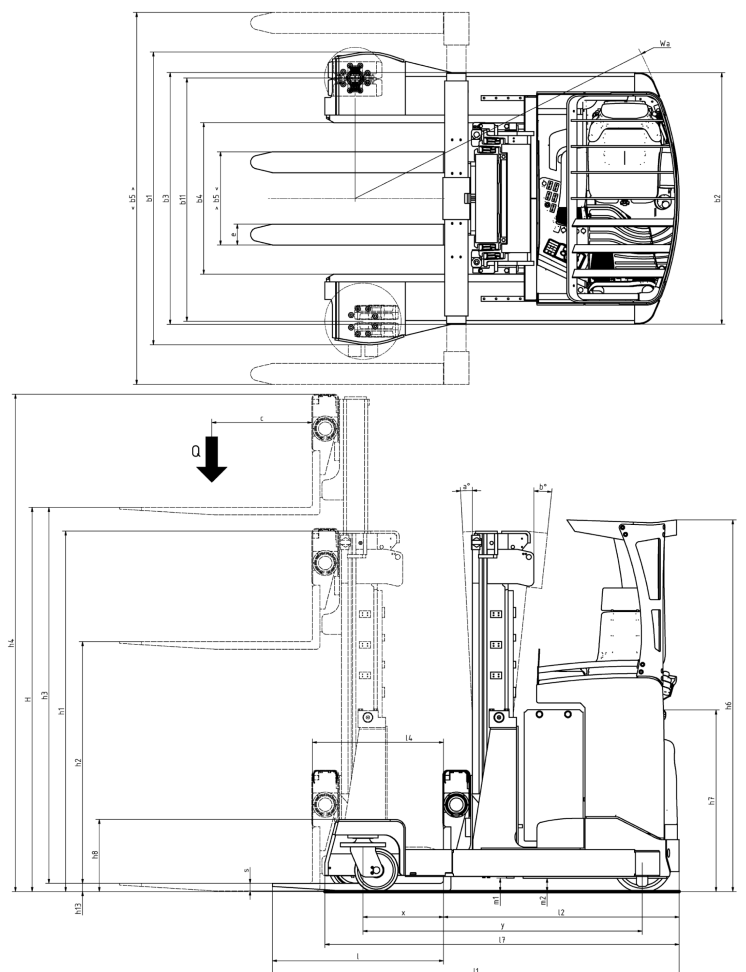




## Multi-directional reach truck

### RTF 200

A multi-directional truck for almost every material handling situation. Stacking and transporting long loads as easily as operations of pallet goods or pallet goods handling. Equipped with a standard hydraulic fork spread, synchronized steering and extraordinary ergonomic features.



Mast type	Lift height H	Height of mast lowered h1	Max mast height h4
Standard/Duplex			
Triplex	4350	2150	5050
	4950	2350	5640
	5250	2450	5950
	5850	2650	6550
	6300	2800	7000
	6800	2967	7500
	7500	3200	8200
	8000	3367	8700
	8500	3533	9200

Distinguishing mark	0	Specification		RTF 200
	1.2	Manufacturer's type designation		UFW 200
	1.3	Drive: electric (battery or mains), diesel, petrol, fuel gas		Electric
	1.4	Operator type: hand, pedestrian, standing, seated, order-picker		Seated
	1.5	Load capacity/rated load	Q t	2,0
	1.6	Load centre distance	c mm	600
	1.8	Load distance, centre of load axle to fork	X	449*
	1.9	Wheelbase	y mm	1505
Weight	2.1	Service weight incl battery	kg	4360
	2.2	Axle load, with load, front/rear	kg	
	2.3	Axle load, without load, front / rear	kg	2550 / 1810
	2.4	Axle load, fork outreached with load, front / rear	kg	800 / 5560
	2.5	Axle load, fork retracted with load, front / rear	kg	2360 / 4000
Tyres, chassis	3.1	Tyres		Vulcollan
	3.2	Tyre size, drive side	mm	355*155
	3.3	Tyre size, load side	mm	260*85, 320*100
	3.4	Dimensions additional wheels (castor wheels)		mm
	3.5	Wheels, number front/rear (drive side/load side, x = driven wheels)		1x / 4
	3.6	Track, drive side	b10 mm	0
	3.7	Track, load side	b11 mm	1444
Dimensions	4.1	Tilt of mast/fork carriage, forward/backward		Grad
	4.2	Height, mast lowered	h1 mm	See table
	4.3	Free lift	h2 mm	h3/3-13
	4.4	Lift height H = h13+h3	H mm	See table
	4.5	Height, mast extended	h4 mm	See table
	4.6	Straddle lift	h5 mm	
	4.7	Height of overhead guard (cabin)	h6 mm	2215
	4.8	Seat height/stand height	h7 mm	1087
	4.10	Height of wheel arms	h8 mm	430
	4.11	Additional lift	h9 mm	
	4.14	Stand height, elevated	h12 mm	
	4.15	Height lowered	h13 mm	50
	4.19	Overall length	l1 mm	2473*
	4.20	Length to face of forks	l2 mm	1323*
	4.21	Overall width	b1 mm	1744 / 1498
	4.21.1	Width over stabilizers	mm	
	4.22	Fork dimensions	s/e/l mm	45 / 125 / 800,1000,1150
	4.23	Fork carriage to ISO 2328, clas / form A, B		
	4.24	Width of fork carriage	b3 mm	1500/2170
	4.25	Width over forks, min/max	b5 mm	560/1550, 560/2220
	4.26	Distance between wheel arms	b4 mm	903
	4.27	Width across guide rolls	b6 mm	
	4.28	Reach distance	l4 mm	704*
	4.29	Reach lateral	b7 mm	
	4.30	Reach lateral from vehicle centerline	b8 mm	
	4.31	Ground clearance, mast	m1 mm	81
	4.32	Ground clearance, centre of wheelbase	m2 mm	80
	4.33	Aisle width with pallet 1000 x 1200, crosswise	Ast mm	2787*
	4.34	Aisle width for pallet 800 x 1200, lengthwise	Ast mm	2823*
		Transfer aisle	0 mm	
	4.35	Turning radius	Wa mm	1772
	4.37	Length incl reach legs	l7 mm	1942
	4.38	Distance to swivelling-fork pivot	0 mm	
Performance data	5.1	Travel speed, with/without load		km/h
	5.1.1	Travel speed with/without load, backwards		km/h
	5.2	Lift speed, with/without load		m/s
	5.3	Lowering speed, with/without load		m/s
	5.4	Reach speed, with / without load		m/s
	5.7	Gradient, with/without load		%
	5.8	Max gradeability, with / without load, 5 min rating		%
	5.9	Acceleration time 0-10 m, with/without load		s
	5.10	Service brake: electric, hydraulic		El. - drive motor
	5.10.1	Parking brake: electric, hydraulic		Mech. - drive motor
Electric engine	6.1	Drive motor, rating S2 60 min	kW	7,2
	6.2	Lift motor	kW	15
	6.3	Battery according to DIN 43531/35/36	A,B,C	43531C
	6.4	Battery voltage / Battery capacity	V/Ah	48 / 450-900
	6.5	Battery weight	kg	712 - 1567*
	6.6	Power consumption according to VDI cycle	kWh/h	8,5
Additional data	8.1	Speed regulation		Electronic
	10.1	Operating pressure attachments	bar	150
	10.2	Oil flow for attachments	l/min	25
	10.7	Noise level at operator's ear, according to EN 12 053	db(A)	59,7

\* Varies according to battery size

All rights reserved to change above specification